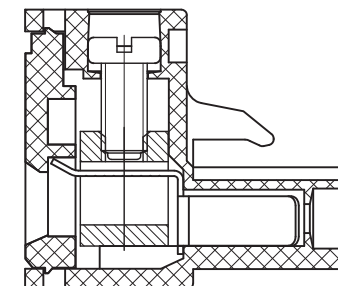


REV	CONTENT	CHK	DATE
V0.0	CONTENT	SK	2014-12-08

- NOTES:
1. Rating:300V 15A;
 2. Insulation Withstands Voltage: AC2000V/MIN
 3. Insulation Resistance: 500MΩ or more at DC500V
 4. Using Temperature Range: -40°C~+105°C
 5. Screw Torque Vlaue:0.4N.m
 6. Suitable Electric Wire: 28~12AWG
 7. "★" is the important dimension.



SECTION:A-A

Kinghelm®

02P 仅此卡勾

28-12AWG
300V 15A

2EDG
-7.62
CE

Total Pitch Tolerances in mm										Nominal dimension range in mm										⊥	≡	-	//
over 0 to 30	over 30 to 53	over 53 to 70	over 70 to 90	over 90 to 115	over 115 to 150	over 150 to 250	over 250 to 350	over 350 to 500	over 0 to 30	over 30 to 53	over 53 to 70	over 70 to 90	over 90 to 115	over 115 to 150	over 150 to 200	over 200 to 250	over 250 to 320	over 0 to 10	over 10 to 100	over 100 to 150	over 150 to 150		
±0.18	±0.20	±0.25	±0.3	±0.35	±0.44	±0.60	±0.70	±0.85	±0.20	±0.25	±0.30	±0.35	±0.44	±0.55	±0.70	±0.80	±0.90	0.2	0.3	0.3	0.2	0.3	0.5

ITEM	NAME OF PART	NO. OF PART	Q'TY	MATERIAL	NOTE
DWG.	SK	DATE	2014-12-08	SIZE A4	UNITS mm
CHK.		DATE		SCALE 2.5:1	7.62
APP.		DATE		NAME	K600R-XXP-XS
深圳市金航标电子有限公司				www.kinghelm.com.cn	
KH-ZBK300R-5P-7.62G				0755-28190160	